



Accelerate your IBM Business

You know your customers. You understand your market. Arrow helps you turn that knowledge into real growth with IBM.

This programme is designed to support partners at every stage of their IBM journey — from identifying opportunities to developing solutions and scaling their business. Whether you're just getting started or looking to expand,

Arrow provides the tools, expertise and support to help you move forward quickly.

ARROW

IBM
Distributor



A programme built around your growth

No two partners grow in the same way. That's why this programme is structured in stages, allowing you to access the content, tools and support that match your business priorities at any point in time.



DISCOVER

Identify where to start and where to grow.

This stage focuses on helping you understand the opportunity:

- Discover relevant IBM solutions
- Identify customer needs and use cases
- Access product-focused content and sales assets
- Explore where your business can create value



DEVELOP

Turn opportunities into practical solutions.

This stage helps you move from idea to execution:

- Define use cases and solution approaches
- Validate opportunities with technical support
- Access hands-on resources and expertise
- Shape offers around real customer needs



SCALE

Grow your IBM business like an expert.

This stage focuses on developing momentum:

- Develop go-to-market strategies
- Generate demand and pipeline
- Strengthen your market presence
- Expand customer opportunities



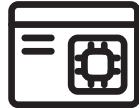
Why Arrow

Arrow works alongside IBM partners to make it easier to move from opportunity to execution.

With deep technical expertise, hands-on support and a strong ecosystem across EMEA, Arrow helps partners:



Develop capabilities faster



Create real, customer-ready solutions



Bring offers to market more efficiently



Grow their IBM business over time



Start accelerating your IBM business

Wherever you are in your journey, Arrow provides the support you need to take the next step.